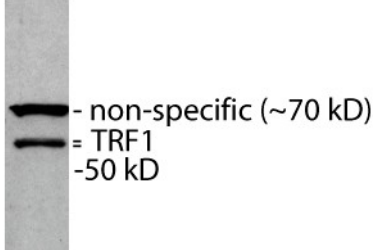
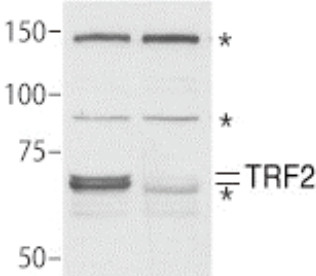
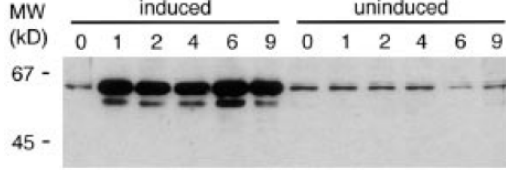


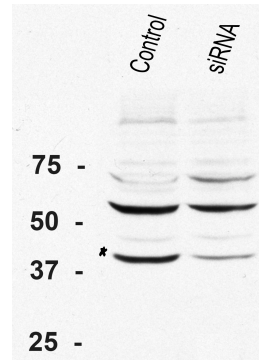
## Antibodies for Human Shelterin Subunits

Protein:	hTRF1	<p>HeLa WCE 370/371</p> 
Antigen:	Baculovirus full length TRF1	
Serum:	Rabbit Polyclonal Aff. Pur	
Number:	370	
Concentration:	1:1000-2000	
Reference:	Van Steensel and de Lange, 1997	

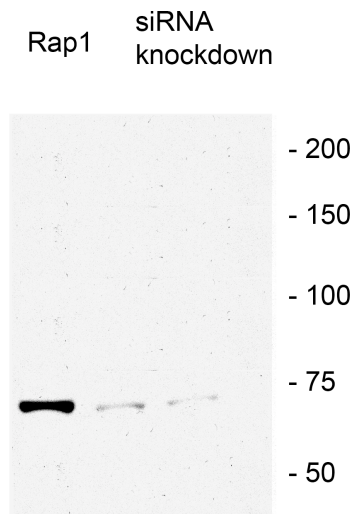
Protein:	hTRF2	<p>Luc TRF2 sh</p>  <p>* Non specific bands</p> <p>10*5 HTC75 cells/lane anti hTRF2 (647) 1:4000 1 hr RT</p>
Antigen:	Baculovirus full length hTRF2	
Serum:	Rabbit Polyclonal Aff. Pur	
Number:	647	
Concentration:	1:4000	
Reference:	Zhu et al, 2000	

Protein:	hTRF2	
Antigen:	aa16-42 peptide	
Serum:	Rabbit Polyclonal Aff. Pur	
Number:	508	
Concentration:	1:300	
Comments:	Basic domain	
Reference:	Van Steensel et al., Cell 1998 Figure 1B: Endogenous and overexpressed TRF2	

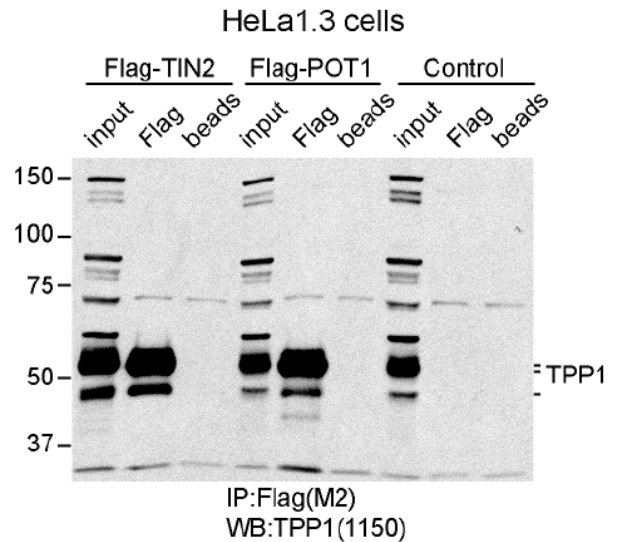
Protein: hTIN2  
 Antigen: Baculovirus full length human TIN2  
 Serum: Rabbit Polyclonal Aff. Pur  
 Number: 864/865  
 Concentration: 1:2000  
 Comments: run long on a 10% gel  
 Reference: Ye and de Lange, 2004 (GandD)



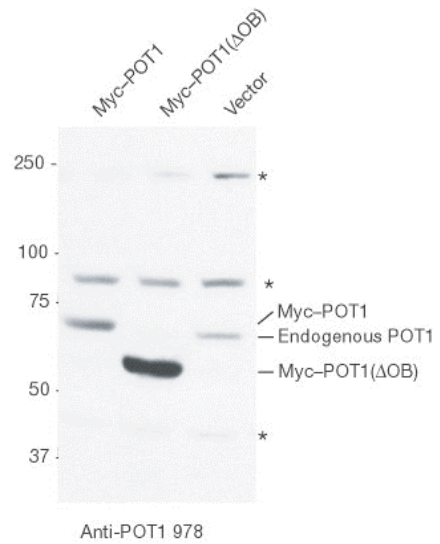
Protein: hRap1  
 Antigen: Baculovirus full length Rap1  
 Serum: Rabbit Polyclonal Aff Pur  
 Number: 764/765  
 Concentration: 1:2,000  
 Cross reacts: hamster, mouse  
 Comments: IF shows centrosomal cross reactivity  
 Reference:



Protein: hTPP1  
 Antigen: GST human TPP1 (1-250)  
 Serum: Rabbit Polyclonal Aff Pur  
 Number: 1150  
 Reference: Made by Jeff Ye.  
 Reference: Takai and de Lange 2010 (Suppl. Fig 3; TPP1 identified based on co-IP with TIN2 and POT1)



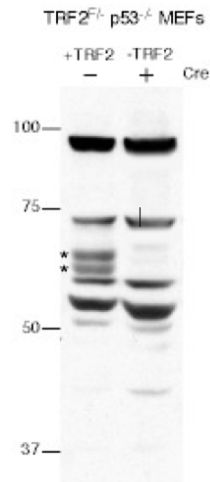
Protein: hPOT1  
Antigen: aa271-294 peptide Serum: Rabbit Polyclonal Aff. Pur  
Number: 978  
Concentration: 1:1000  
Comments: Guanidine renat  
Reference: Loayza and de Lange, Nature 2003



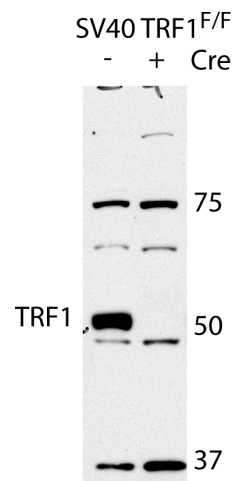
Protein: hPOT1  
Antigen: baculovirus human POT1  
Serum: Rabbit Polyclonal Aff Pur  
Number: 1048/1049  
Reference: Loayza and de Lange, Nature 2003  
**DOES NOT WORK IN WESTERNS**  
Works very well for ChIP (crude serum) and IF (1:2000-1:5000)

## Antibodies for Mouse Shelterin Subunits

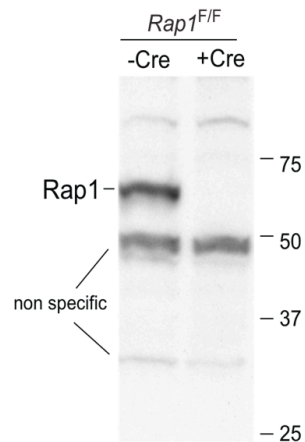
Protein: mTRF2  
 Antigen: GST-mTRF2  
 Serum: Rabbit Polyclonal Aff. Pur  
 Number: 1254/1255  
 Concentration: 1:5000  
 Reference: Celli and de Lange, 2005



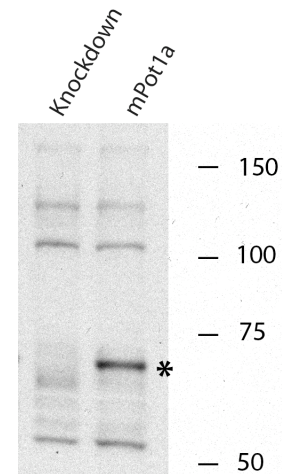
Protein: mTRF1  
 Antigen: GST-mTRF1ΔMyb  
 Serum: Rabbit Polyclonal Aff. Pur  
 Number: 1449  
 Concentration: 1:3000  
 Reference: Sfeir et al. 2009



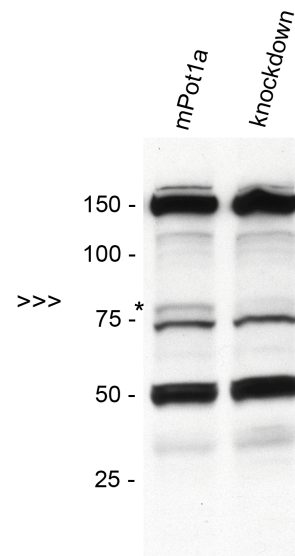
Protein: mRap1  
 Antigen: GST-full length mRap1  
 Serum: Rabbit Polyclonal Aff. Pur  
 Number: 1252  
 Concentration: 1:10000  
 Reference: Celli and de Lange, 2005



Protein: mPOT1a  
Antigen: aa395-421 peptide Serum: Rabbit Polyclonal Aff. Pur  
Number: 1221  
Concentration: 1:1000  
Comments: Guanidine renat  
Reference: Hockemeyer et al. 2006



Protein: mPOT1b  
Antigen: aa285-307 peptide  
Serum: Rabbit Polyclonal Aff. Pur  
Number: 1223  
Concentration: 1:1000  
Comments: Guanidine renat  
Reference: Hockemeyer et al. 2006



---

Protein: mTIN2  
Antigen: GST-TIN2 full length  
Serum: Rabbit polyclonal Aff Pur.  
Number: 1447/1446  
Only for IF/ChIP

---

de Lange Lab Antibodies for Shelterin Components – Western Blot and IF

AB Number	Protein	Antigen	Serum	Western	IF	Cross reacts with	Comments
370	hTRF1	Baculovirus full length TRF1	Rabbit Poly	1:1000-2000	1:1000		
644/645	mTRF1	aa10-32 peptide	Rabbit Poly	----	1:2000		Acidic domain
1448/1449	mTRF1	GST-mTRF1 Δ myb	Rabbit Poly	1:3000			
647	hTRF2	Baculovirus full length hTRF2	Rabbit Poly	1:2000-4000	1:2000-3000		
508	hTRF2	aa16-42 peptide	Rabbit Poly	1:300	1:1000		Basic domain
1254/1255	mTRF2	GST -mTRF2	Rabbit Poly	1:3000-5000	1:5000- 10000		
764/765	hRap1	Baculovirus full length Rap1	Rabbit Poly	1:1000-2000	1:2000	Mouse, Hamster	Centrosomal staining
1252	mRap1	GST - mRap1	Rabbit Poly	1:10000	1:10000		
864/865	hTIN2	Baculovirus full length hTIN2	Rabbit Poly	1:2000-3000	1:3000-5000		run long on a 10% gel
1447/1446	mTIN2	GST-mTIN2	Rabbit Poly	----	1:2000		
1150	hTPP1	GST-hTPP1 aa1-250	Rabbit Poly	1:1000	1:1000		
978	hPOT1	aa271-294	Rabbit Poly	1:1000	----		Guanidine renat
1048/1049	hPOT1	Baculovirus full length hPOT1	Rabbit Poly	----	1:2000		
1221	mPOT1a	aa395-421	Rabbit Poly	1:500-1000	----		Guanidine renat
1223	mPOT1b	aa285-307	Rabbit Poly	1:500-1000	----		Guanidine renat